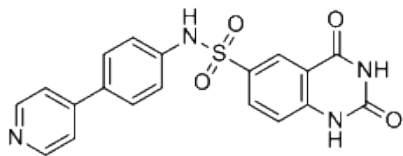


11.55
11.53
—10.63
8.58
8.57
8.56
8.28
8.28
—7.61
7.25
7.24
7.22
—5.76

2.51
2.51
2.50
2.50
2.49
—1.11
—0.00



PC-3525801, DMSO-d6

2.00
1.01
1.91
0.00
1.98
2.01
2.97

